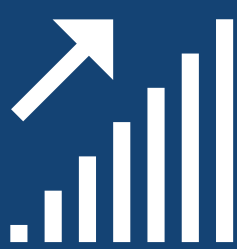


# The Challenge of Finding AI Talent: Navigating the Labyrinth of Expertise

In today's technology-driven landscape, AI is no longer a mere buzzword; it's a transformative force reshaping industries. However, as organizations rush to embrace its potential, they encounter a growing talent dilemma.



## **Soaring Demand, Limited Supply**

The integration of AI across sectors has caused a surge in demand for AI professionals. However, the supply remains inconsistent, leading to a significant talent gap.



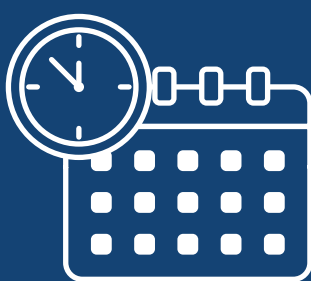
## **Need for Specialized Expertise**

AI isn't one-size-fits-all. Solutions vary by industry, making both domain-specific and technical know-how crucial. This dual expertise is rare, amplifying the talent challenge.



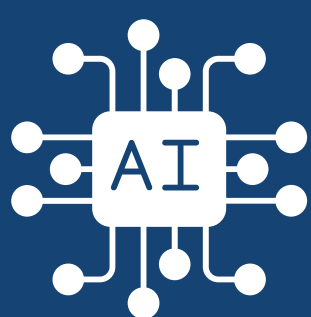
## **Cost Implications**

The high demand means top-tier salaries for AI experts. This financial strain can be particularly challenging for emerging startups and SMBs.



## **Rapid Technological Evolution**

AI tech evolves at a breakneck pace. Keeping an in-house team updated is not only costly but also diverts crucial time and energy from ongoing projects.



## **Data Management & Interpretation Challenges**

Beyond just AI, service providers face the Herculean task of managing vast datasets. Merging data science with AI, and factoring in Cloud & DevOps know-how, further intensifies the search for the right talent.